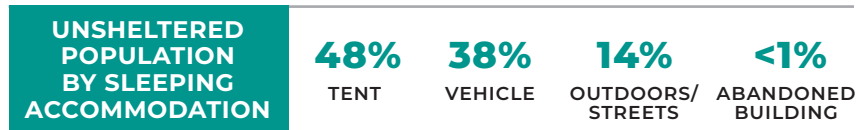
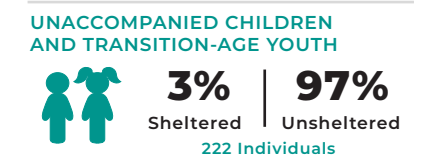
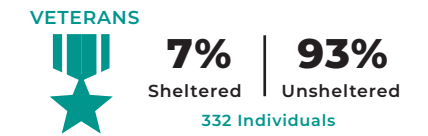
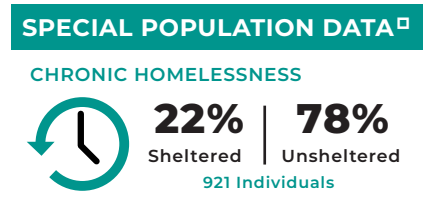
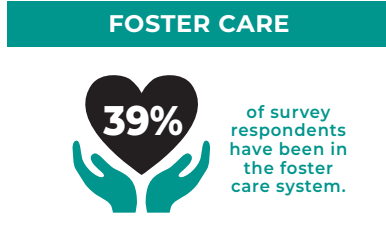
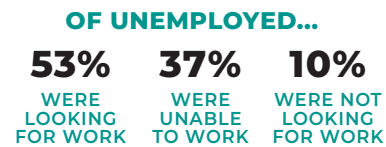
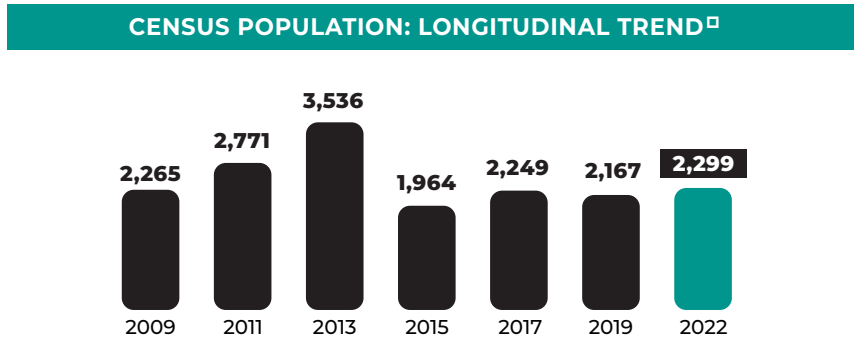
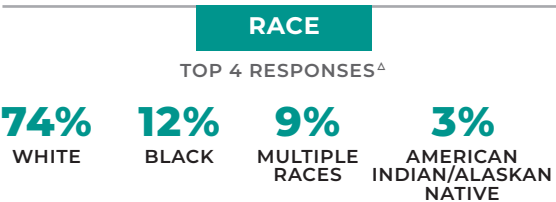
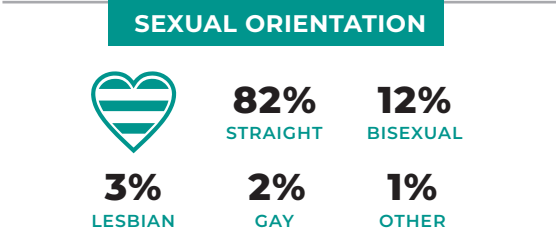
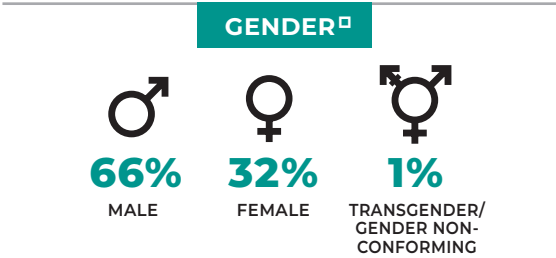
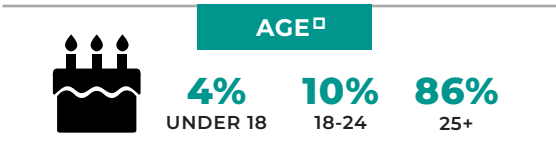
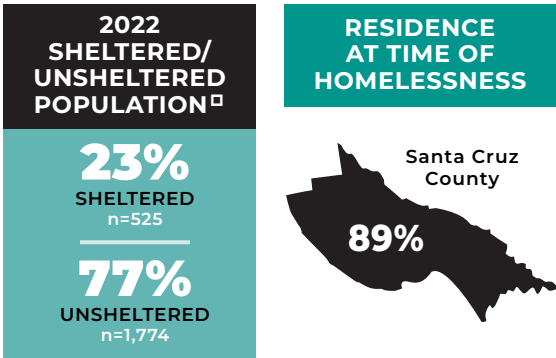


SANTA CRUZ COUNTY

2022 HOMELESS POINT-IN-TIME COUNT & SURVEY

Every two years, typically during the last 10 days of January, communities across the country conduct comprehensive counts of the local homeless populations in order to measure the prevalence of homelessness in each local Continuum of Care.

The 2022 Santa Cruz County Point-in-Time Count was a community-wide effort conducted on February 28th, 2022. In the weeks following the street count, a survey was administered to 333 unsheltered and sheltered individuals experiencing homelessness in order to profile their experience and characteristics.



PRIMARY CONDITION THAT LEAD TO HOMELESSNESS+

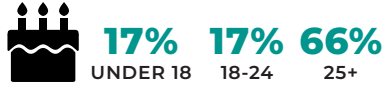
TOP 6 RESPONSES^Δ

37% EVICTION	33% LOST JOB
9% DIVORCE/ SEPARATION/ BREAKUP	9% ALCOHOL/ DRUG USE
8% ILLNESS/ MEDICAL PROBLEM	6% LANDLORD RAISED RENT

FIRST EPISODE OF HOMELESSNESS



AGE AT FIRST EPISODE OF HOMELESSNESS



DURATION OF CURRENT EPISODE OF HOMELESSNESS



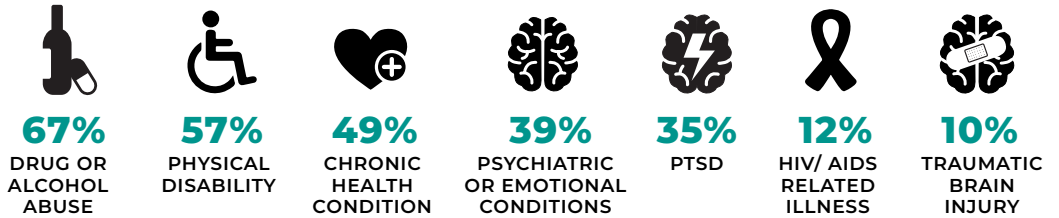
WAYS TO PREVENT LOSING HOUSING+

TOP 4 RESPONSES^Δ

73% EMPLOYMENT ASSISTANCE	50% RENT/ MORTGAGE ASSISTANCE	45% LANDLORD MEDIATION	40% LEGAL ASSISTANCE
-------------------------------------	--	----------------------------------	--------------------------------

SELF REPORTED HEALTH+

Current health conditions that may affect the housing stability or employment of those experiencing homelessness.

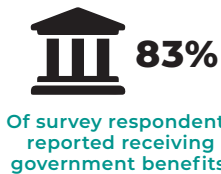


DISABLING CONDITIONS



A disabling condition is defined by HUD as a developmental disability, HIV/AIDS, or a long-term physical or mental impairment that impacts a person's ability to live independently but could be improved with stable housing.

GOVERNMENT SERVICES AND ASSISTANCE



REASONS FOR NOT RECEIVING ANY GOVERNMENT ASSISTANCE+ Top 6 Responses^Δ

42% DON'T WANT GOVERNMENT ASSISTANCE	26% DON'T THINK I AM ELIGIBLE	26% TURNED DOWN
25% PAPERWORK TOO DIFFICULT	17% NO ID	8% IMMIGRATION ISSUES

SERVICES CURRENTLY ACCESSING+ Top 6 Responses^Δ

64% FREE MEALS	46% BUS PASSES	46% HEALTH SERVICES
36% SHELTER DAY SERVICES	30% MENTAL HEALTH SERVICES	27% LEGAL SERVICES

*SUBPOPULATION DEFINITIONS

CHRONICALLY HOMELESS

An individual with one or more disabling conditions or a family with a head of household with a disabling condition who:

- » Has been continuously homeless for 1 year or more and/or;
- » Has experienced 4 or more episodes of homelessness within the past 3 years.

VETERANS

Persons who have served on active duty in the Armed Forces of the United States. This does not include inactive military reserves or the National Guard unless the person was called up to active duty.

FAMILIES

A household with at least one adult member (persons 18 or older) and at least one child member (persons under 18).

UNACCOMPANIED YOUTH YOUNG ADULTS

Youth under the age of 18 and young adults from the ages of 18 to 24 years old (TAY) who are experiencing homelessness and living without a parent or legal guardian.

+ Multiple response question, results may not add up to 100%.
^Δ Only displaying top responses, all response data will be available in full report.
[□] Sourced from census data rather than survey data.
 Note: Some percentages have been rounded so total percentage will equal 100%.

Source: Applied Survey Research, 2022, Santa Cruz County Homeless Census & Survey, Watsonville, CA.